



**UNIVERSITY TARGU MURES
MEDICAL CAMPUS HAMBURG**

UMCH - Introduction

Agenda

- UMCH – University Profile
- The UMCH Campus in Hamburg
- Study Concept
- Study Structure
- Student Accommodation
- Tuition Fees
- Preparatory Courses
- Admission Procedure
- Commission





UMCH

University
Profile



UMCH: Proven Quality – New Location



UMFST of Targu Mures



UMCH is a branch of the UMFST (George Emil Palade University of Medicine, Pharmacy, Science, and Technology of Targu Mures in Romania)



UMCH – University Profile



UMCH

International campus of the State university UMFST
(founded in 1945) in Romania



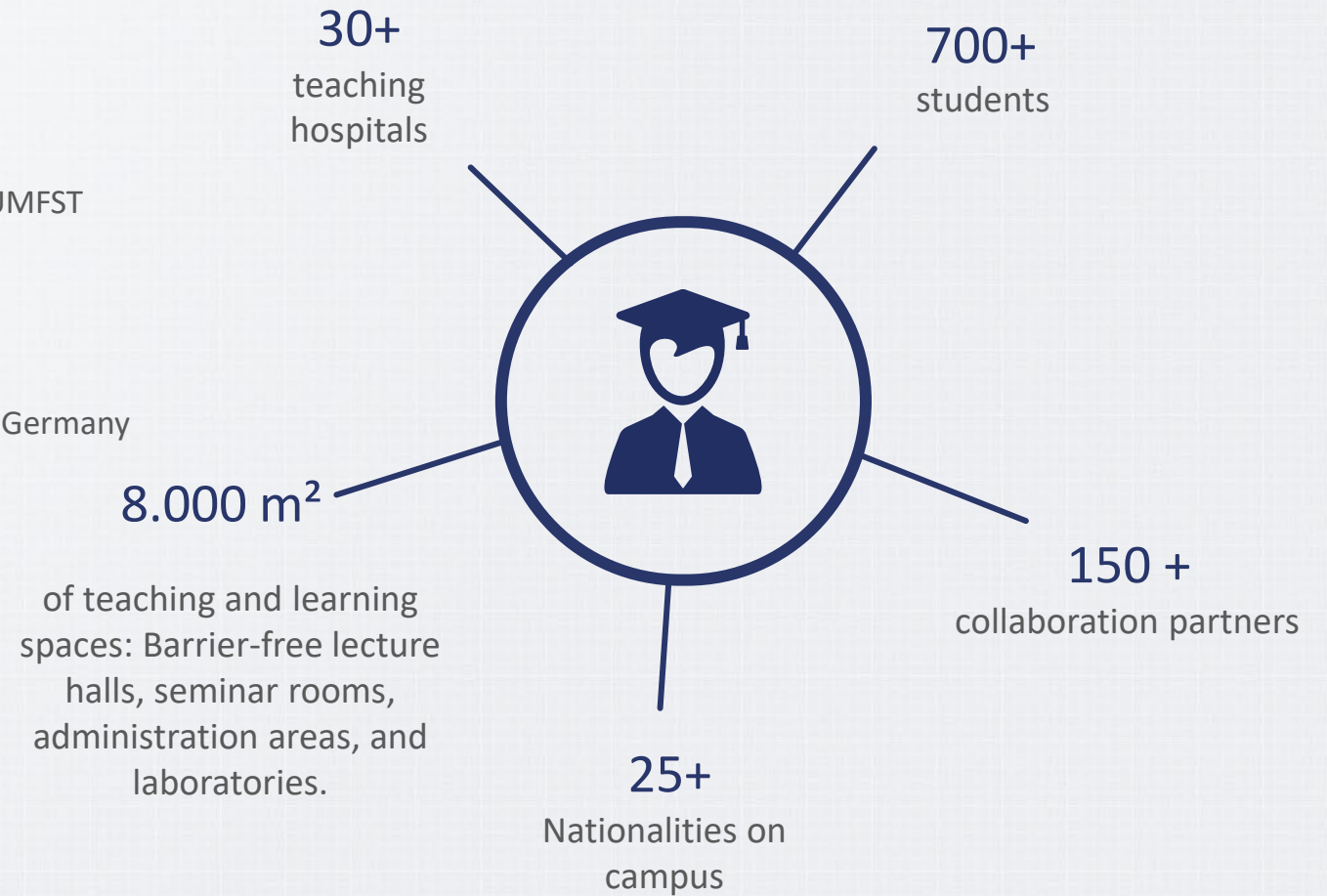
Medicine in focus

First University to offer medicine in English in Germany



Internationality

Many years of experience with
English language medical studies



Accreditation

Accreditation



The UMFST of Targu Mures is accredited by the Romanian Agency for Quality Assurance in Higher Education (**ARACIS**).

ARACIS is a full member of the European Association for Quality Assurance in Higher Education (**ENQA**).

Status



The university is distinguished by **anabin** (data base for the evaluation of foreign educational qualification published by the **German Standing Conference of Ministers of Education and Cultural Affairs**) with the highest possible status H+.

USA & Canada



UMFST of Targu Mures is listed in the World Directory of Medical Schools (**WDOMS**).

This makes students eligible for the USMLE

FAIMER-school ID:
F0000226

International Recognition

Worldwide recognition



The six-year medical program at UMCH leads to a **university degree in Human Medicine**, which corresponds to the professional qualification listed in Annex V of the EU Professional Qualification Directive and is the basis for obtaining a license to practice medicine throughout the EU and in many other countries.

ECTS (European Credit Transfer and Accumulation System)

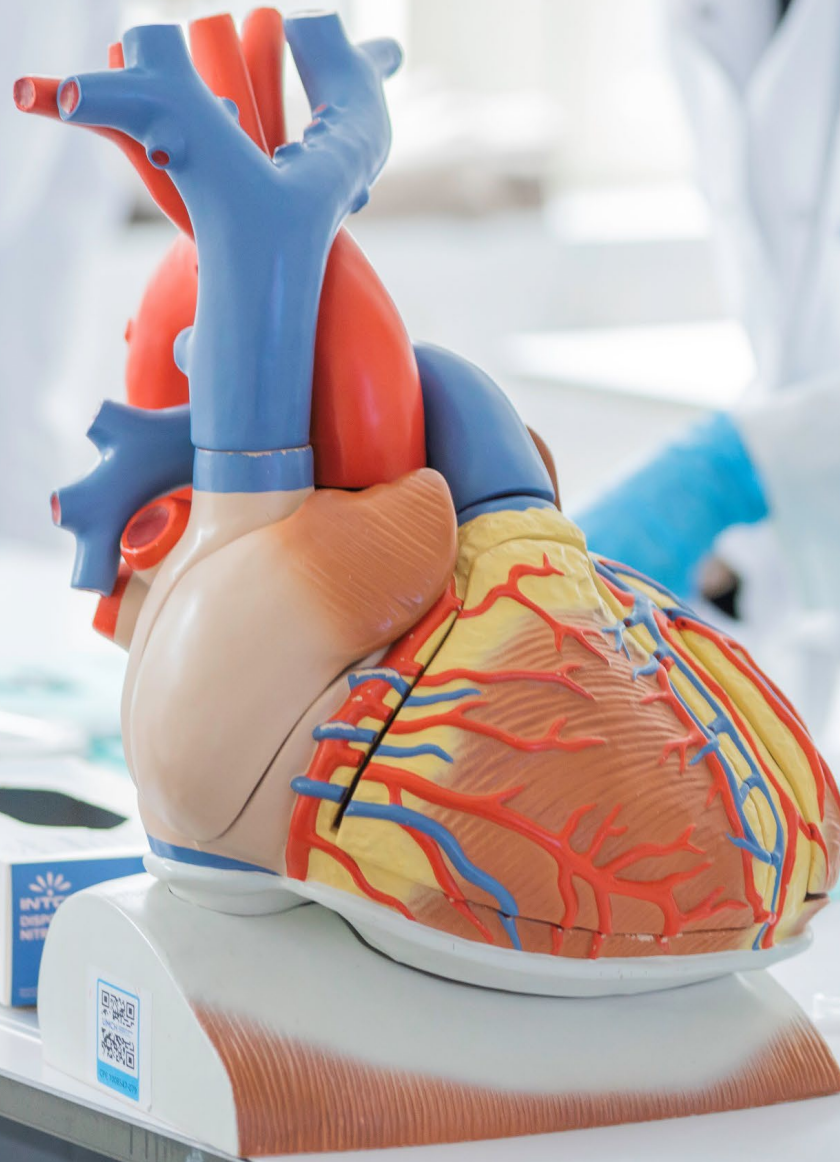


During their studies, students earn a total of **360 ECTS credits** (60 ECTS credits per academic year).



The UMCH
Campus

Study Concept



Future-oriented Study Concept

First-class medical studies



- ✓ 6 year degree program in medicine in English with an international campus flair
- ✓ Practice-oriented study model with instruction in small groups
- ✓ Clinical-practical training in German and international teaching hospitals
- ✓ State-of-the-art and highly digital university campus in Hamburg
- ✓ Top ranked university

Future-oriented Study Concept

First-class medical studies



- ✓ Recognized in the EU, UK, USA, Canada and many other countries
- ✓ Eligible for USMLE, UK GMC etc. after graduation
- ✓ Hospitality and housing
- ✓ Possibility to practice medicine in Germany upon graduation
- ✓ Possibility to pursue your PhD at the UMCH

UMCH compared to other international universities

First-class medical studies

- 1 There is **no need to have completed a pre-med** (several years of undergraduate studies) **or have taken the MCAT** (Medical College Admission Test) to start studying at UMCH
- 2 **Significantly lower tuition fees** than in a lot of other countries (in the USA or UK, for example, studying medicine costs about twice as much)
- 3 **Shorter duration of studies** (6 years) compared to many countries
- 4 **No prior knowledge of German or Studienkolleg** is required



Academic Research

Close interaction between research and teaching



- As the largest medical university and research institution in Romania, the UMFST of Targu Mures, with more than 11,000 students, contributes significantly to the development of evidence-based medicine.
- Research and teaching go hand in hand at UMCH. All teaching staff of the (international) medical faculty - and thus also of UMCH - are encouraged to **actively pursue their research mission**
- In addition to our own working groups in the field of basic and clinical research, we also collaborate with **international experts within the framework of more than 150 cooperations.**

Academic Research

Overview of research topics and current projects

Main research areas

- Cancer Research
- Cardiovascular Sciences
- Neuroscience
- Biocompatible Materials

Except from current research projects

- Coating and surface modifications of nano implants for medical use
- Vascular biology and arteriosclerosis
- Tissue engineering for heart valve replacement
- The role of gephyrin in Alzheimer's dementia
- Micro-fragmented adipose tissue as a therapeutic agent for cancer



Academic Support

UMCH Professors have an open-door policy for students on campus and are available before, during and after the lectures

Career counselling

- Support for students on issues related to career development
- Evaluation of goals, strategies and prospects



More certainty about the future career path

Lecture-related consultation hours

- Fixed blocks of time during which students of the 1st and 2nd year of study can ask the UMCH lecturers individual questions related to their classes
- This guarantees that all UMCH students are able to follow the subject matter at all times



Individual support with subject-specific questions and problems

Career Opportunities

Excellent chances to find a well-paid position on the international job market



Students' advantages on the job market

- 1 Global Prestige: UMCH offers training in Germany, renowned worldwide for producing highly esteemed professionals.
- 2 Lucrative Opportunities: Graduates from UMCH are among the highest earners globally, thanks to the prestige of a German education.

Career Opportunities

Excellent chances to find a well-paid position on the international job market



Students' advantages on the job market

- 3 Tailored Specialization: During your residency, students have the freedom to choose their specialized area, ensuring a perfect fit for your future career.
- 4 Unique Profile: UMCH graduates possess an exceptional profile with international, English-language education and invaluable practical experience gained in German teaching hospitals.



Study Structure



Study Structure

- 1 The total duration of study is **6 years and commences with the winter semester**
- 2 Each semester consists of **14 weeks**
- 3 The curriculum includes a lot of **compulsory elective courses** that complement the range of subjects in an optimal way



Clinical internships and practical training

Structure of studies – Clinical stage of studies (from the 3rd year)

	Semester 1			
	3 rd Year	4 th Year	5 th Year	6 th Year
W1	Lectures & Practical Activities	Lectures	Lectures	Lectures & Practical Activities
W2				
W3				
W4				
W5				
W6	Lectures & Practical Activities	Orthopedics & Traumatology Pediatric Surgery & Orthopedics	Internal Medicine (Gastroenterology, Nephrology & Diabetology)	Obstetric & Gynecology
W7				
W8		General Surgery		
W9			Plastic & Esthetic Surgery	
W10		Urology		
W11	Medical Semiology (1)		ENT	Family Medicine
W12				
W13	Medical Semiology (1)	Endocrinology	Ophthalmology	Infectious Diseases
W14				

Campus

Hospital

Clinical internships and practical training

Structure of studies – Clinical stage of studies (from the 3rd year)

	Semester 2			
	3 rd Year	4 th Year	5 th Year	6 th Year
W1	Lectures & Practical Activities	Lectures	Lectures	Lectures & Practical Activities
W2				
W3				
W4				
W5				
W6	Lectures & Practical Activities	Internal Medicine	Pediatrics	Obstetrics & Gynecology
W7				
W8		Cardiology & Hematology	Pediatric Psychiatry	
W9		Child Care	Neurology	
W10		Emergency Medicine		
W11	Medical Semiology (2)	Radiology & Medical Imaging	Anesthesia & Intensive Care	Infectious Diseases
W12				
W13	Surgical Semiology (2)	Occupational Medicine & Professional Diseases	Pneumology	Psychiatry
W14		Mund-, Kiefer & Gesichtschirurgie	Medical Oncology	

Campus

Hospital

The Importance of Learning German for the Teaching Hospital Phase



Attainment of the B2 level is **required** for participation in the teaching hospital phase (third year of study)

- In the first two years of study, the students will learn German with the **goal of reaching B2. Classes are included in their schedules**
- If they already have German language skills, then they'll be invited for a short **personal interview** during the first week of study to find your individual learning path



The importance of learning German

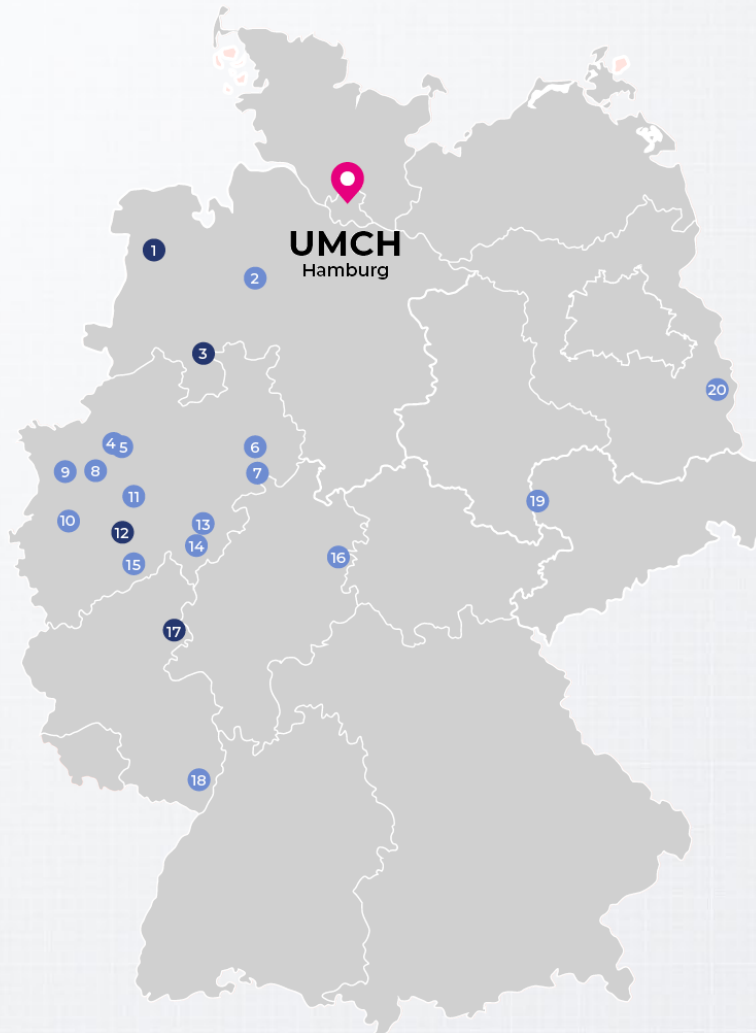
Applicants do not require prior knowledge of the German language however in order to participate in clinical training in Germany (years 3 to 6), international students shall have a language level of approximately B2 (Common European Framework of Reference for Languages) in German by the beginning of the third academic year.

The German course offered on campus for international students is a support service only. Students are responsible for learning the German language themselves and for reaching the required level by the appropriate time.



UMCH Teaching Hospitals

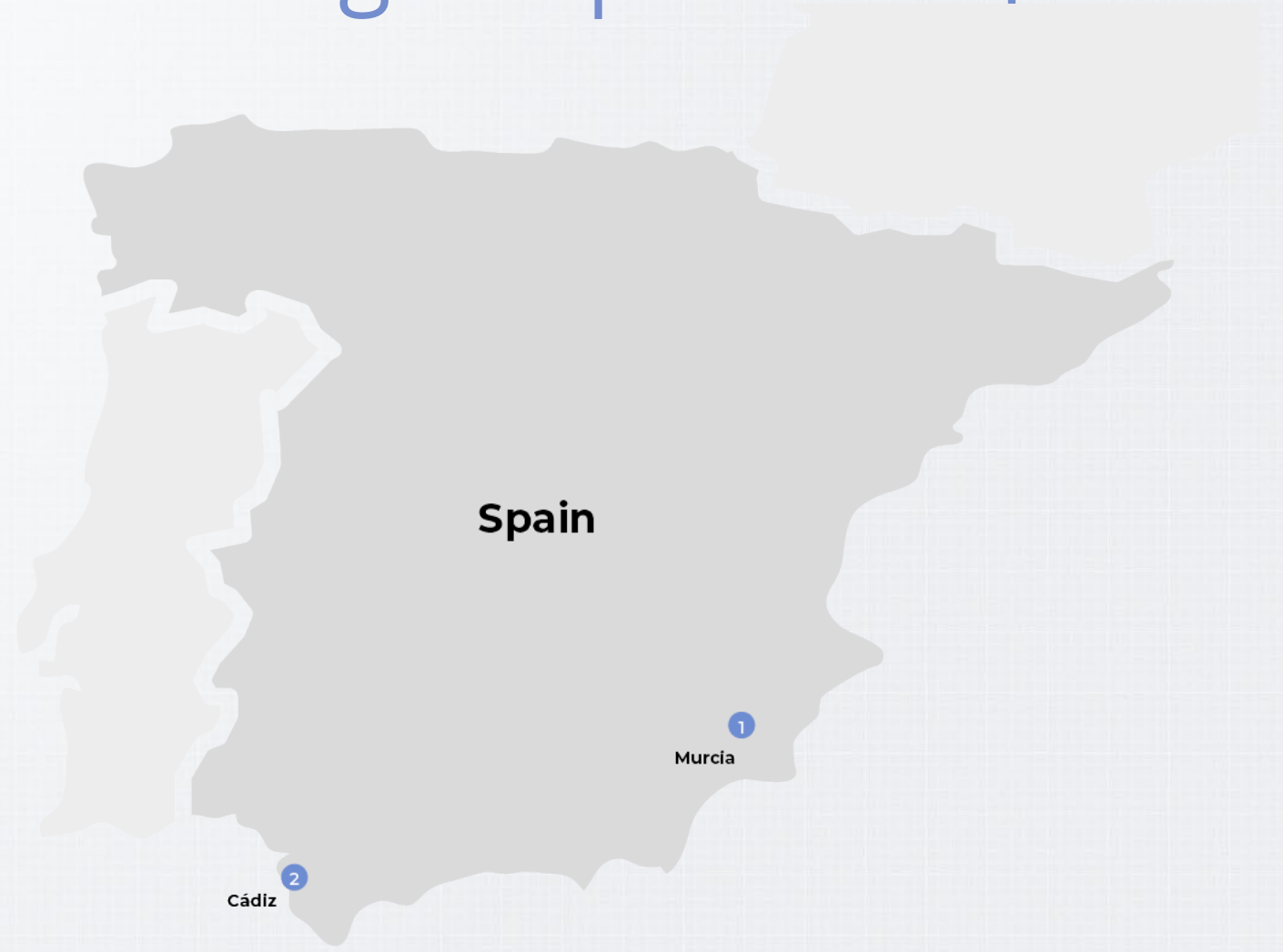
- 1 Klinikum Leer
Leer
- 2 Delme Klinikum
Delmenhorst
- 3 Krankenhaus St. Elisabeth
Damme
- 4 St. Elisabeth-Krankenhaus
Dorsten
- 5 Marien-Hospital
Marl
- 6 Medizinisches Zentrum für Gesundheit
Bad Lippspringe
- 7 Städt. Krankenhaus Maria-Hilf
Brilon
- 8 Knappschaftskrankenhaus
Bottrop
- 9 St. Vinzenz-Hospital
Dinslaken
- 10 St. Josef Krankenhaus
Moers
- 11 Elisabeth-Krankenhaus
Essen
- 12 Evangelisches Krankenhaus
Mettmann
- 13 LWL-Klinik Hemer/Hans-Prinzhorn-Klinik
Hemer
- 14 Klinikum Lüdenscheid
Lüdenscheid
- 15 St. Remigius Krankenhaus
Opladen
- 16 Klinikum Werra-Meißner
Eschwege
- 17 St. Vincenz-Krankenhaus
Limburg
- 18 Diakonissen-Stiftungs-Krankenhaus
Speyer
- 19 Klinikum St. Georg
Leipzig
- 20 Städtisches Krankenhaus
Eisenhüttenstadt



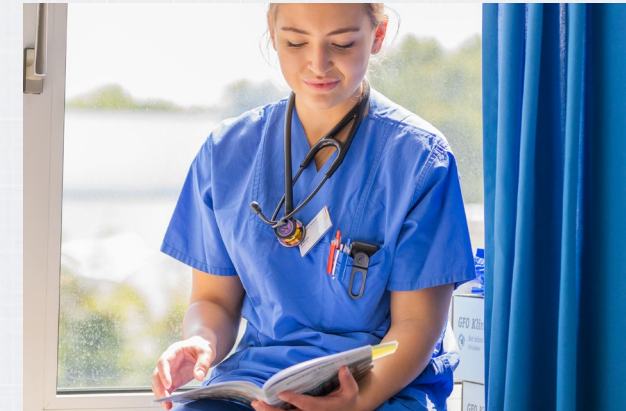
- > 25 teaching hospitals in Germany
- Partnerships with teaching hospitals in Spain and South Tirol
- Valuable insights into the daily life of a medical professional
- Chance to pursue specialization at chosen teaching hospital after graduating.

UMCH Teaching Hospitals in Spain

- ① Clínica San Felipe del Mediterráneo
Murcia
- ① Hospital Asilo Real Piedad
Murcia
- ① Hospital Bernal
Murcia
- ① Hospital Centro Médico Virgen de la
Murcia
- ① Caridad
Murcia
- ① Hospital de Molina
Murcia
- ① Hospital HLA la Vega
Murcia
- ① Hospital Mesa del Castillo
Murcia
- ① Hospital Perpetuo Socorro Cartagena
Murcia
- ① Hospital Quirónsalud Murcia
Murcia
- ① Hospital Residencia Villademar
Murcia
- ① Hospital San José Viamed
Murcia
- ① Hospital Virgen de Alcázar
Murcia
- ① Residencia Los Almendros
Murcia
- ① Santo y Real Hospital de Caridad
Murcia
- ② Clínica Nuestra Señora de la Salud
Cádiz



Clinical internships and practical training



Student Accomodation



Living in Hamburg

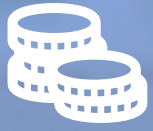
Cozy and affordable student apartments



Student housing for your living comfort

- UMCH cooperates with the private student residences **Uninest**, **THE FIZZ** and **Urban Living** which offer university students the opportunity to live in **fully furnished and modern apartments** at reasonable prices.
- All rooms of **Uninest** have a kitchenette and a bathroom with a **private shower**. The student residence also offers – among other things– **foosball tables**, a **bar** and a **lounge**.
- One of the assets of **THE FIZZ** is the fact that there is a **supermarket** in the building. Furthermore, the building is equipped with **study rooms**, a **roof terrace** and a **movie lounge**.
- **Urban Living** is characterized - among other advantages - by features such as regular **community events** including catering, **apartment cleaning** and its own **sports field**.





Tuition Fees



Tuition Fees

Invest in your future!

The tuition fees are charged for the use and administration of a modern equipped and administered infrastructure on the UMCH and at the partner clinics in Germany and for the use of the academic services of the UMFST of Targu Mures in the form of an accredited study program with highly qualified lecturers in English.

<p>Applicants from EU countries, EEA countries, the United Kingdom and Switzerland</p>	<p>1st to 6th year of study at the campus in Hamburg and in partner hospitals</p> <p>Per Semester</p> <p>€ 14,900</p>	
<p>Applicants from all other countries</p>	<p>1st to 6th year of study at the campus in Hamburg and in partner hospitals</p> <p>Per Semester</p> <p>€ 17,400</p>	
<p>One-time fees</p>	<p>Application fee</p> <p>One-time fee</p> <p>595 €</p>	<p>Enrollment fee</p> <p>One-time fee</p> <p>€ 4,500</p>

Information on the tuition fees

- The tuition fees for the first academic year and the one-time enrollment fee are due simultaneously with the conclusion of the contract.
- The tuition fees are due in advance for each additional semester as follows:
 - for the winter semester: on June 15 of the year in which the winter semester begins;
 - for the summer semester: on December 15 of the year immediately preceding the summer semester.
- In order to submit an application for admissions, all students are required to pay an application fee. The application fee is a one-time fee for all services related to the application process – including guidance, support and organization.
- It is possible to complete the rest of the studies from the 3rd year onwards at the UMFST Campus in Targu Mures to complete the program. With this option, the tuition fees for the period from the 3rd year of study amount to € 5,000. For the first two years of study, the above conditions apply to applicants from EU countries, EEA countries, the United Kingdom and Switzerland or applicants from all other countries.



Preparatory Courses



Medical Preparatory Courses

We also offer voluntary courses for students who wish to be better prepared before starting their studies

College Semester

- **Course duration:** 12 weeks
- **Course contents:** biology, chemistry, physics, mathematics, biochemistry, anatomy, medical theory, preparation for admission procedure, individual consultation
- **Type:** **intensive course**
- **Price:** € 6,800


Pre-Medical Course

- **Course duration:** 3 weeks
- **Course contents:** biology, chemistry, physics
- **Type:** **crash course**
- **Price:** € 2,900



Medical Preparatory Courses

Set Yourself up for Success in your Future Medical Studies

-  Strong Foundation for Medicine, Dentistry, Pharmacy or Veterinary Medicine
-  Lots of Knowledge in Little Time
-  In the Most Attractive European Metropolis
-  Located on Medical University Campus
-  Join Workshops, Events etc.
-  Get a Head-Starting your Career
-  Learn from Specialist Lecturers
-  New Friendships and Contacts



Upcoming Dates

Dates for our College Semester and Pre medical course



Scan the QR-Code to find out when the next dates are!



Admission Procedure



UMCH Online Admission Procedure

Students can apply in 3 easy steps



**Register online
via UMCH's
application portal**
<https://apply.umch.de/>



**Simply upload your
application documents
in the
application portal**



**Take part in the
motivation-based interview
and the brief evaluation
(both via video call)**

Motivation-based Interview + Brief Evaluation

Structure of the admission procedure

Interview

- Language: English
- Possible topics
 - Personal background
 - Qualification and motivation for studies
 - Previous activities in the medical field
- Communication and empathy skills

Brief Evaluation

- Language: English
- 25 Basic questions on biology
- 25 Basic questions on chemistry
- 25 Basic questions on general knowledge

Procedure

- Admission procedure **possible online from home**
- Interview via Video Call
- Brief evaluation via online questionnaire



Key Facts

Everything you need to know about our admission procedure



Application is always possible for the next winter semester as well as the subsequent winter semester



The entire admission procedure is virtual. If you have more than 10 candidates, then we can also arrange an examination on site



Hard copies only need to be submitted after the confirmation of admission



Non-EU citizens: please contact the UMCH team, so that we can deal with these applications individually

Upcoming Admission Dates



Whole admission procedure online

Apply up to two years before starting your studies!



Scan the QR-Code to find out when the next dates are!

Transfer Students

Continue your studies at UMCH

Have potential students already completed some of their medical studies at another university? They can seamlessly continue their academic journey from the second year at UMCH!

To facilitate this transition, please inform them that they need to provide certain documents. After receiving these documents, our university will conduct individual evaluations to determine their eligibility for enrollment into the second year at UMCH and to assess the recognition of any previously earned credits

Documents to be handed in

- **Transcript of Records** in English
- **Syllabus** of your previous university in English



UMCH
University Targu Mures Medical Campus Hamburg



Phone: +49 (0)40 2093485-99
E-mail: agency-support@edu.umch.de



Albert-Einstein-Ring 11-15
22761 Hamburg

